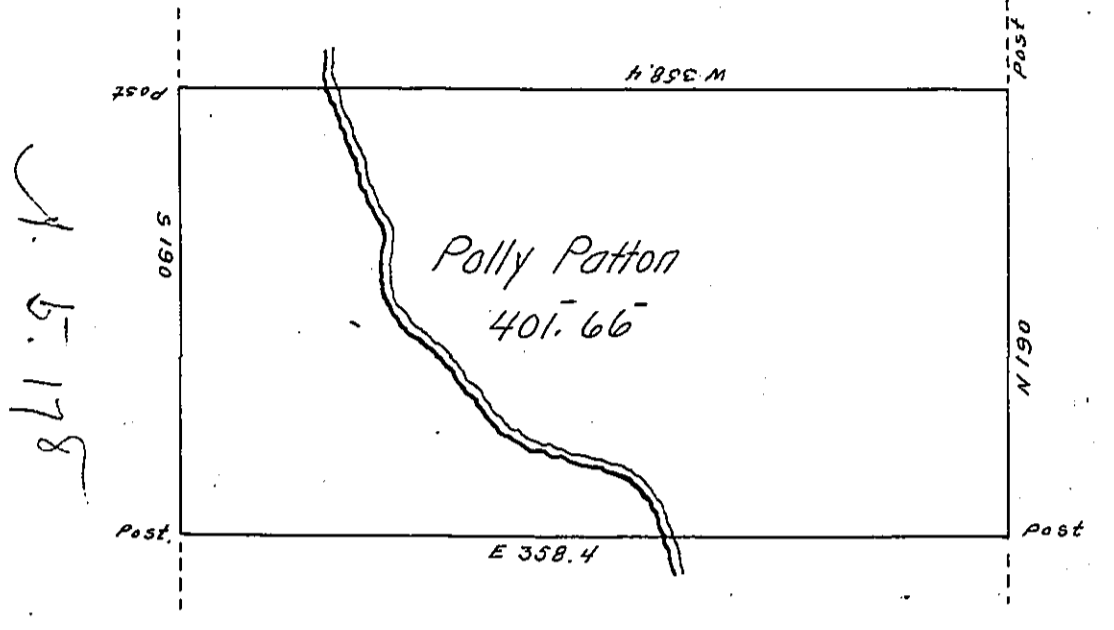


Q. 4<sup>th</sup>. 282

Levey Elliot



J. 5. 178

Sarah Hull  
C. 172 - 55

Isaac Patton

C. 8. 69

By Virtue of a Warr<sup>t</sup> dated <sup>\*</sup>3<sup>d</sup> of Sep<sup>r</sup>. 1792 Surveyed the 10<sup>th</sup> of November 1793  
 Unto Polly Patton the above described Tract of Four hundred and one Acres  
 and 66 perches of Land & Allowance. Situated on a Southern branch of  
Mahopeney—in Luzerne County.

By W<sup>m</sup> Montgomery D. S<sup>c</sup>

To Daniel Brodhead Esq<sup>r</sup> }  
 Surv.<sup>r</sup> Gen.<sup>l</sup> of Pensylv<sup>a</sup> }

\* Say Warrant dated 13<sup>th</sup> day of August 1792.

N. 6.

IN TESTIMONY that the above is a copy of the original remaining on file in  
 the Department of Internal Affairs of Pennsylvania, made  
 conformably to an Act of Assembly approved the 16th day of  
 February, 1833, I have hereunto set my Hand and caused  
 the Seal of said Department to be affixed at Harrisburg,  
 this eleventh day of June 1906.

*Isaac P. Brown*  
 Secretary of Internal Affairs.